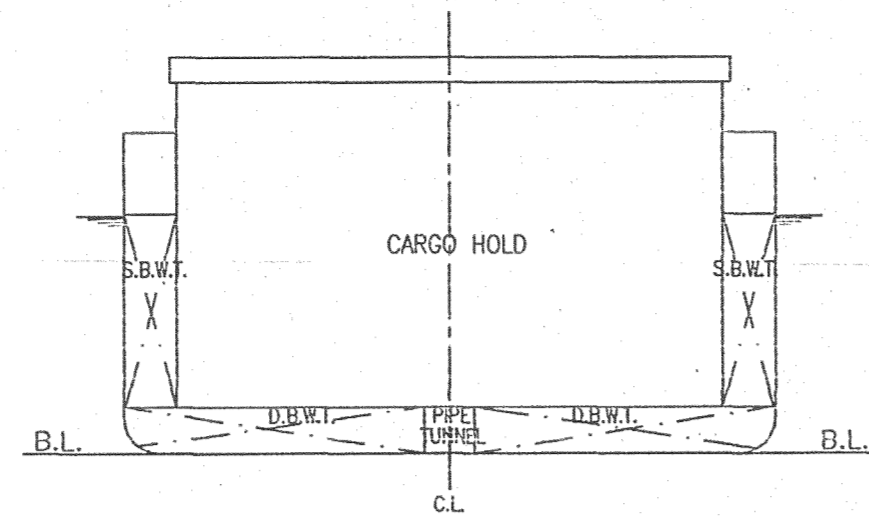
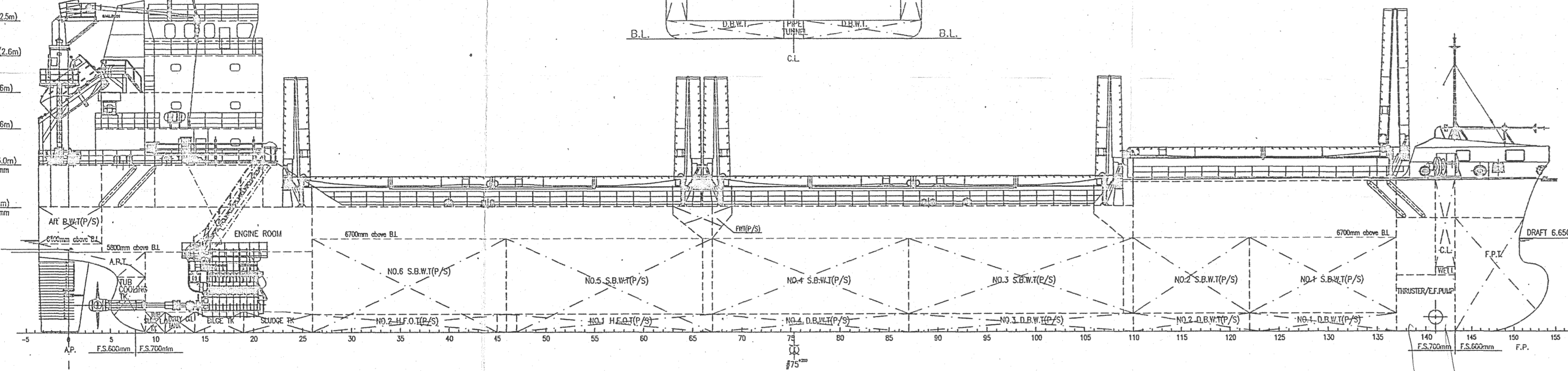


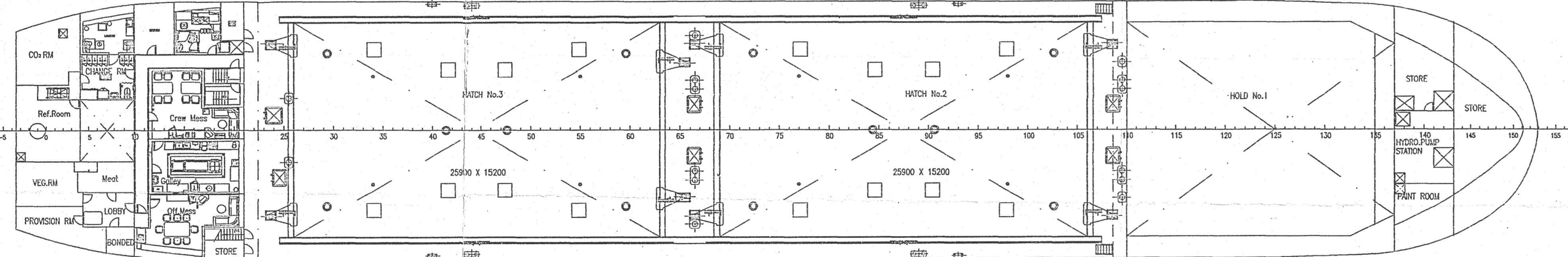
MID. SECTION



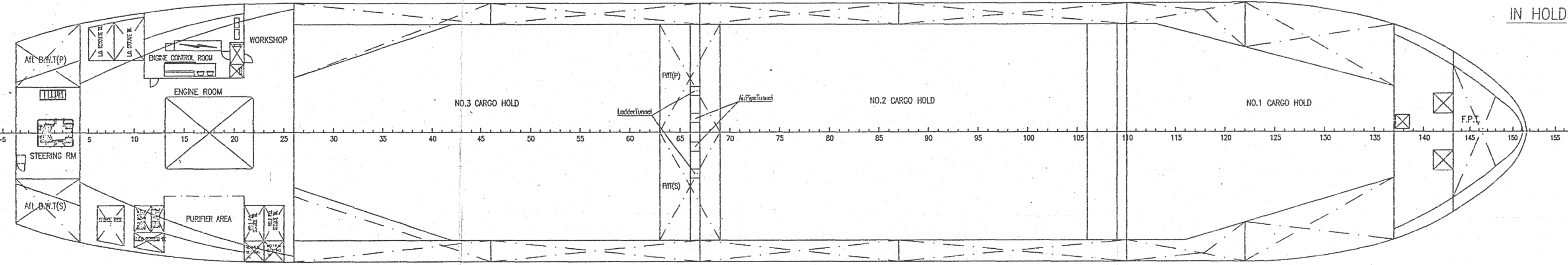
- COMPASS DK (2.5m) Comber III
- BRIDGE DK (2.6m) Comber III
- No.2 DK (2.6m) Comber III
- No.1 DK (2.6m) Comber III
- POOP DK (3.0m) Comber 50mm
- Depth (9.0m) Comber 50mm



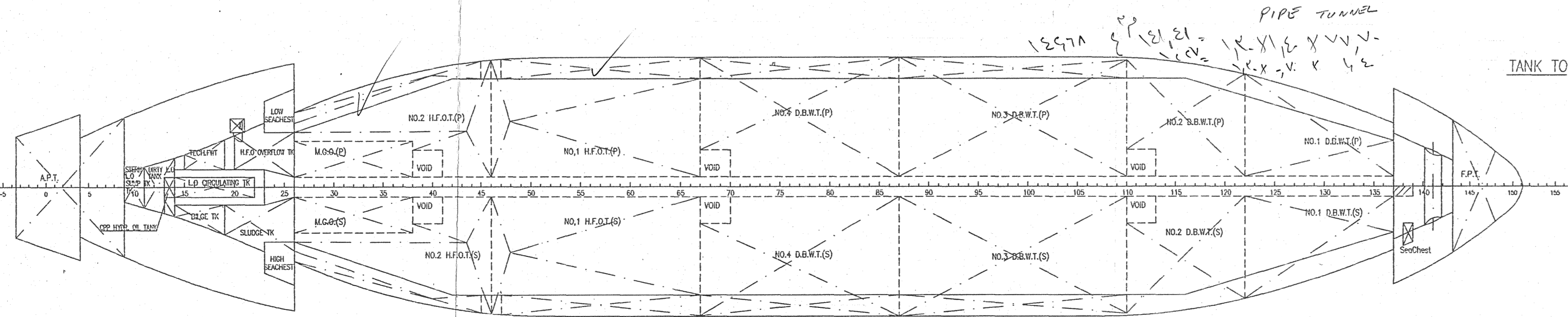
MAIN DECK



IN HOLDS



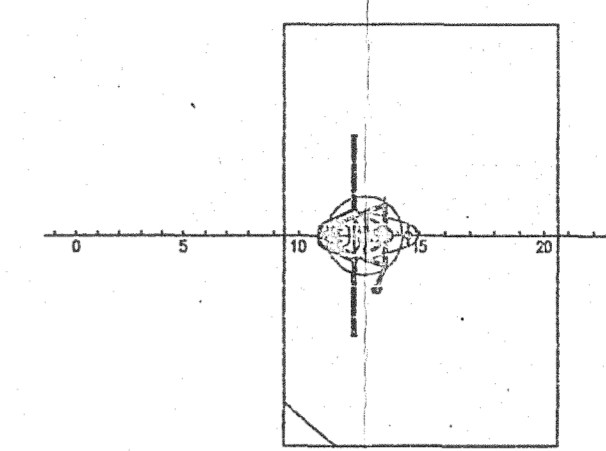
TANK TOP



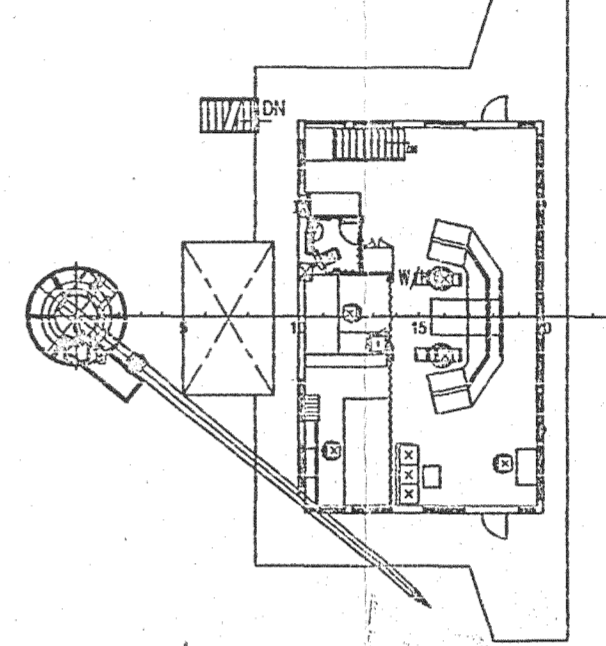
MAIN DIMENSIONS

LENGTH OVER ALL	~108.40m
LENGTH BETWEEN PERPENDICULARS	103.90m
BREADTH MOULDED	18.20m
DEPTH MOULDED	9.00m
DRAUGHT DESIGN	5.50m
DRAUGHT SCANTL	6.65m
DEADWEIGHT (at d=6.65 m)	7600DWT
MAIN ENGINE	MAN B&W 7S26HC 1set
SERVICE SPEED	12.4 Knots
at designed draft with 90ZMCR	
COMPLEMENT	13P

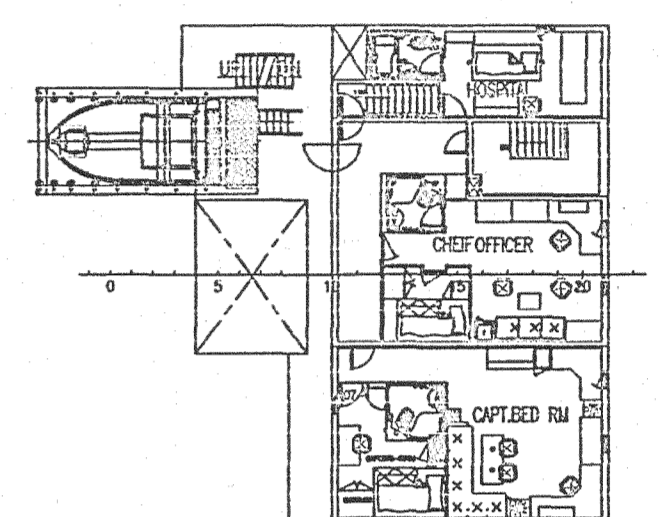
COMPASS DECK



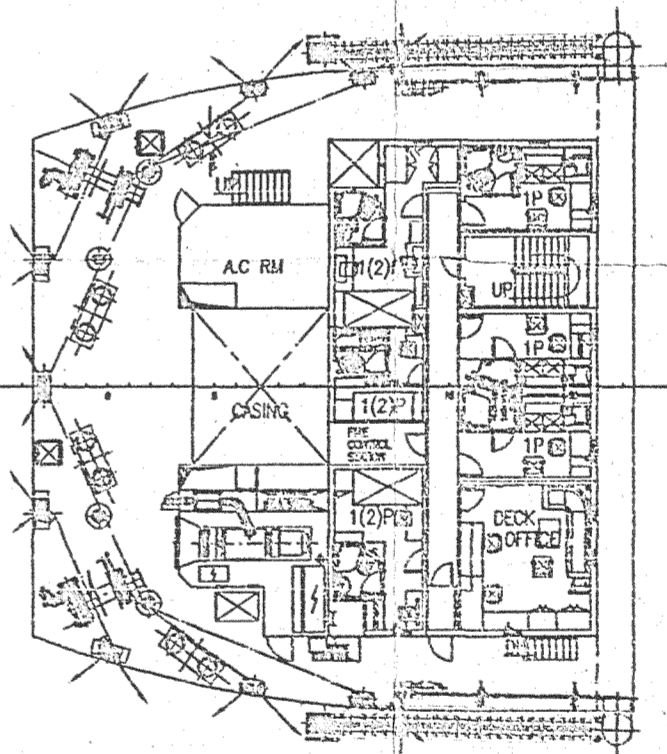
BRIDGE DECK



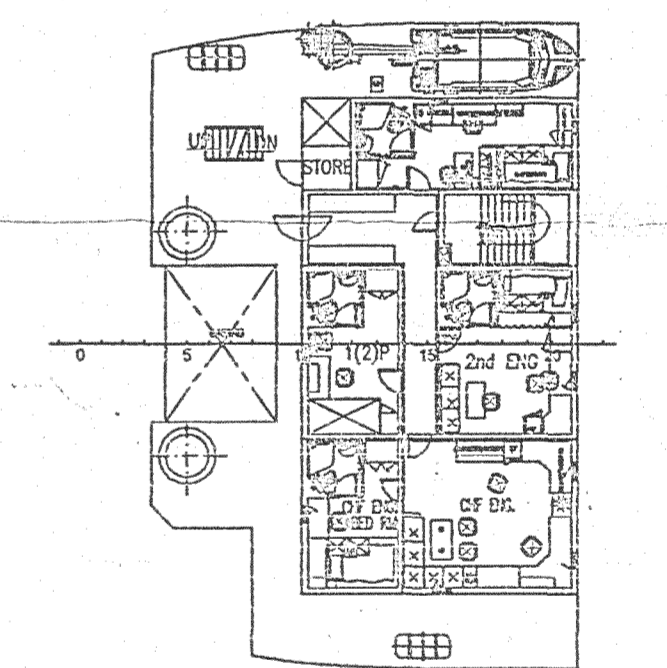
NO.2 DECK



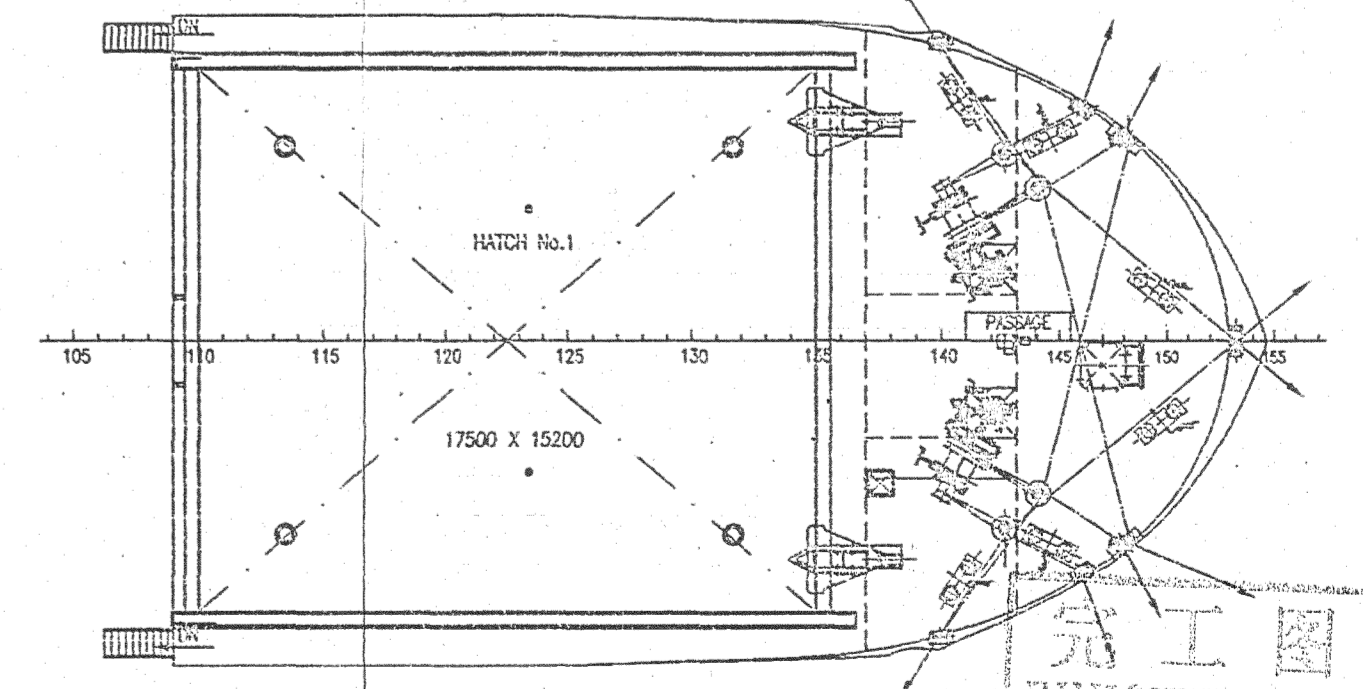
POOP DECK



NO.1 DECK



FORECASTLE DECK



完工圖  
FINISHED PLAN

BUILDER	YANGZIJIANG/SUMEC SHIPYARD	SHIP'S NO.	YZJ2003-0370-000
DESIGNER	MARINE DESIGN & RESEARCH INSTITUTE OF CHINA		JSS030-C01-004
	7600DWT BULK CARRIER	DETAIL DESIGN	
			Q84.4194.100.002
	GENERAL ARRANGEMENT		第 1 页 共 1 页
			1:200
			MARIC
			面积: 0.50m²

PIPE TUNNEL  
15971

10.91 = 20.9V = 20.9 \* 0.5 = 10.45  
10.9 - 10.45 = 0.45